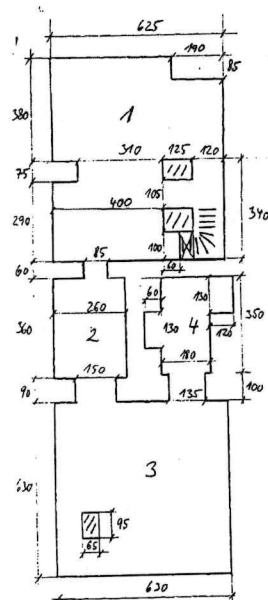


vel 2G

HAVELSKA' 11,13/503,506 (SUTEREN)


$$\begin{array}{r} 1 \quad 42,56 \text{ m}^2 \\ 2 \quad 10,71 \text{ m}^2 \\ 3 \quad 39,07 \text{ m}^2 \\ 4 \quad 9,99 \text{ m}^2 \\ \hline \Sigma = 102,33 \text{ m}^2 \end{array}$$